



*Everyway, Everyplace...*

[www.emesteker.com](http://www.emesteker.com)

# Industrial Wheels

# Light Duty Industrial Castors

## EM Series

Light Duty Industrial Castors

90 - 230 Kg 80-100-125-150-200

### EM Series Wheels

Pressed sheet steel, white zinc plated, double ball bearings, swivel head, plastic dust protection, wheel axle with bolts and nuts.



## EM Series



Light Duty Industrial Castors

90 - 230 Kg 80-100-125-150-200

### EM Series Wheels

Pressed stainless steel sheet, double ball bearing, swivel head, plastic dust protection, wheel axle with bolts and nuts.



## EK Series

Light Duty Industrial Castors

90 - 210 Kg 100-125-150

### EK Series Wheels

Pressed sheet steel, white zinc plated, double ball bearings, swivel head, plastic dust protection, wheel axle with bolts and nuts.



# Medium Duty Industrial Castors

## EZ Series

Medium Duty Industrial Castors

90 - 350 Kg 100-125-150-160



### EZ Series Wheels

Pressed yellow zinc-plated sheet steel, double ball bearings, swivel head, plastic dust protection, wheel axle with bolts and nuts.



## EZ Series



Medium Duty Industrial Castors

90 - 350 Kg 100-125-150-160



### EZ Series Wheels

Pressed stainless steel sheet, double ball bearing, swivel head, plastic dust protection, wheel axle with bolts and nuts.



## EG Series

Medium Duty Industrial Castors

110 - 210 Kg 100-125-150



### EG Series Wheels

Pressed sheet steel, white zinc plated, double ball bearings, swivel head, plastic dust protection, wheel axle with bolts and nuts.



# Heavy Duty Industrial Castors

## ED Series

Heavy Duty Industrial Castors

80 - 950 Kg 55-80-100-125-150-200

## EH Series

Heavy Duty Industrial Castors

350 - 950 Kg 125-150-170-200-220



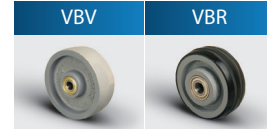
### ED Series Wheels

Heavy pressed sheet steel, yellow zinc plated, reinforced and light treated ball cup, plastic dust protection, wheel axle with bolts and nuts.



### EH Series Wheels

Tongs welded from steel sheet, cast table, double ball bearing, wheel axle with swivel head bolts and nuts.



## EX Series

Heavy Duty Industrial Castors

225 Kg 150

## Ei Series

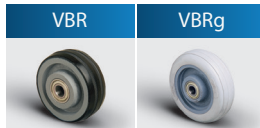
Heavy Duty Industrial Castors

110 - 550 Kg 80-100-150



### EX Series Wheels

Pressed sheet steel, white zinc plated, double ball bearings, swivel head, plastic dust protection, wheel axle with bolts and nuts.



### Ei Series Wheels

Pressed steel plate, white zinc plated, double ball bearing, rotating head, plastic powder protection, wheel axle with bolts and nuts.



# Extra Heavy Duty Industrial Castors

## EJ Series

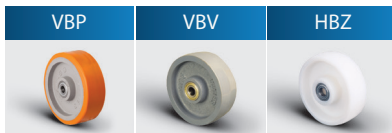
Extra Heavy Industrial Castors

1000 - 2400 Kg 150-200-250



### EJ Series Wheels

Cast steel welded tong and bearing, cast iron table (ductile iron), bute and conical bearing table connection bolt, adjustable nut.



## EW Series

Extra Heavy Industrial Castors

1500 - 4600 Kg 150-200-250-300-350



### EW Series Wheels

Cast steel welded tong and bearing, cast iron table (Ductile iron), bute and conical bearing table connection bolt, adjustable nut.



## EAY Series

Extra Heavy Industrial Castors

150 - 1000 Kg 100-125-150-200



### EAY Series Wheels

Cast steel welded tong and bearing, cast iron table (ductile iron), bute and tapered bearing, table connection bolt, adjustable nut.



## EV Series

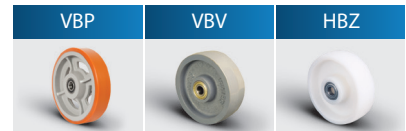
Extra Heavy Industrial Castors

550 - 2300 Kg 150-200-250-300-350



### EV Series Wheels

Cast steel welded tong and bearing, cast iron table (ductile iron), bute and tapered bearing, table connection bolt, adjustable nut.



## EVY Series

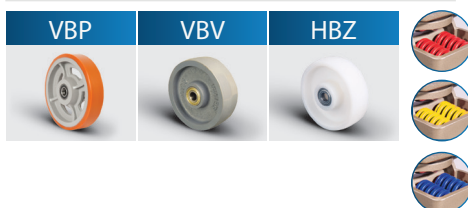
Extra Heavy Industrial Castors

900 - 1600 Kg 200-250-300



### EVY Series Wheels

Cast steel welded tong and bearing, cast iron table (ductile iron), bute and tapered bearing, table connection bolt, adjustable nut.



## EVY Series Direction Locked

Extra Heavy Industrial Castors

900 - 1600 Kg 200-250-300



### EVY Series Wheels

Cast steel welded tong and bearing, cast iron table (ductile iron), bute and tapered bearing, table connection bolt, adjustable nut.



# Extra Heavy Duty Industrial Castors

## EA Series

Extra Heavy Industrial  
Castors

250 - 1350 Kg    150-200-250



### EA Series Wheels

Cast steel welded tong and bearing, cast iron table (ductile iron), bute and tapered bearing, table connection bolt, adjustable nut.

VBP	VBPb	VBV	
			
HBZ	ZBP	ABP	VBR
			

# Supermarket Equipment Castors

## ES Series

Supermarket Equipment Castors

70 - 90 Kg 100-125



### ES Series Wheels

Pressed sheet steel, white zinc plated double ball bearings, swivel head, bolt and nut wheel axle.



## EY Series

Supermarket Equipment Castors

80 Kg 125



### EY Series Wheels

Pressed sheet steel, white zinc plated, double ball bearing, swivel head, bolt and nut wheel axle.



3 channels

2 channels

## ESP Series

Supermarket Equipment Castors

90-100 Kg 100-125



### ESP Series Wheels

Housing made of plastic material, double ball bearing, swivel head, riveted wheel axle.



## ER Series

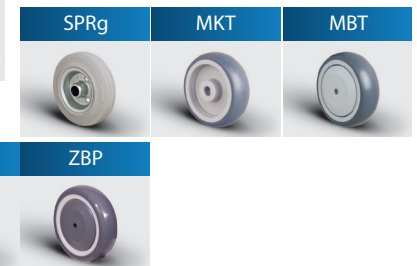
Supermarket Equipment Castors

70 - 150 Kg 80-100-125-150-200



### ER Series Wheels

Pressed sheet steel, white zinc plated double ball bearings, swivel head, bolt and nut wheel axle.





# Hospital Equipment Castors

## ECH Series

Hospital Equipment Castors

150 Kg 125-150-200



### ECH Series Wheels

Pressed sheet steel, white zinc plated, double ball bearing, self-aligning tongs, polypropylene thermoplastic coated wheel with pulley.

ZBP-MBT



## EC Series

Hospital Equipment Castors

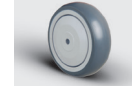
90 Kg 100-125



### EC Series Wheels

Tongs with plastic body, gray (RAL 9002), double ball bearing, swivel head, riveted wheel axle.

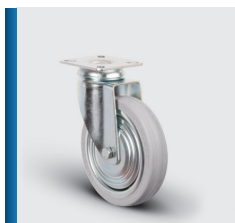
MBT



## ER Series

Hospital Equipment Castors

70 - 150 Kg 80-100-125-150-200



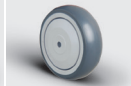
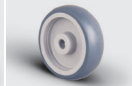
### ER Series Wheels

Pressed sheet steel, white zinc plated double ball bearings, swivel head, bolt and nut wheel axle.

SPRg

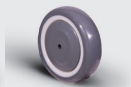
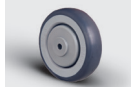
MKT

MBT



MBR

ZBP



## ESP Series

Hospital Equipment Castors

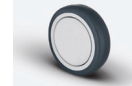
90-100 Kg 100-125



### ESP Series Wheels

Housing made of plastic material, double ball bearing, swivel head, riveted wheel axle.

MBT



## EQ Series

Hospital Equipment Castors

40-50 Kg 50-75-100



### EQ Series Wheels

PP sheave TPE coating or PA sheave TPU coating, polypropylene or polyamide body.

ZKP



# Service and Furniture Equipment Castors

## EB Series

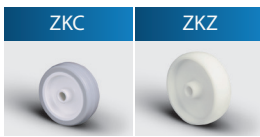
Service and Furniture Equipment Castors

30 Kg 50



### EB Series Wheels

Pressed sheet steel, white zinc plated, double ball bearings, swivel head, riveted wheel axle.



## EL Series

Service and Furniture Equipment Castors

15 - 25 Kg 28-32-38



### EL Series Wheels

Pressed sheet steel, white zinc plated, single ball bearing, swivel head, riveted wheel axle.



## EP Series

Service and Furniture Equipment Castors

35 - 70 Kg 50-75-100



### EP Series Wheels

Pressed sheet steel, white zinc plated, double ball bearings, swivel head, riveted and bolted wheel axle.



## ET Series

Service and Furniture Equipment Castors

55 - 100 Kg 50-75



### ET Series Wheels

Pressed sheet steel, white zinc plated, double ball bearings, swivel head, riveted and bolted wheel axle.



## EU Series

Service and Furniture Equipment Castors

35 - 65 Kg 50-75-100-150



### EU Series Wheels

Pressed sheet steel, white zinc plated, double ball bearing, swivel head, riveted wheel axle.



## EF Series

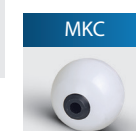
Service and Furniture Equipment Castors

40 - 55 Kg 40-50



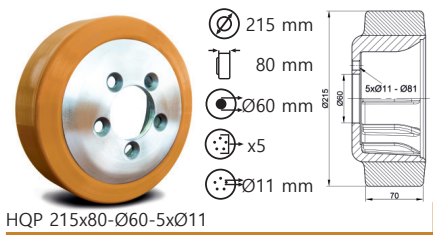
### EF Series Wheels

Pressed steel sheet, chrome plated, double row of ball bearings, swivel head, riveted wheel axle.

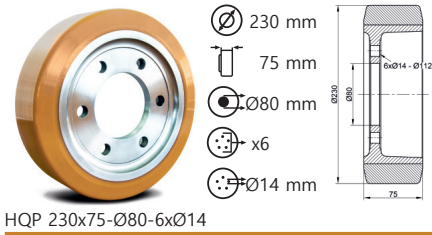


# **Material Handling and Forklift Wheels**

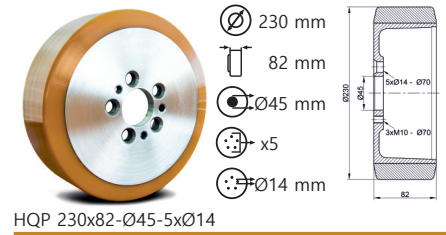
# Drive Wheels



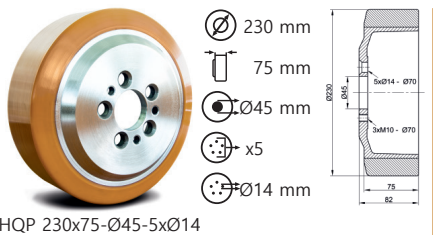
HQP 215x80-Ø60-5xØ11



HQP 230x75-Ø80-6xØ14



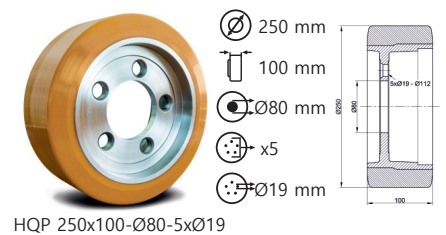
HQP 230x82-Ø45-5xØ14



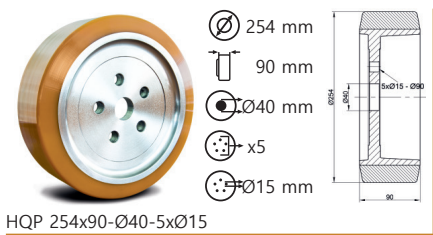
HQP 230x75-Ø45-5xØ14



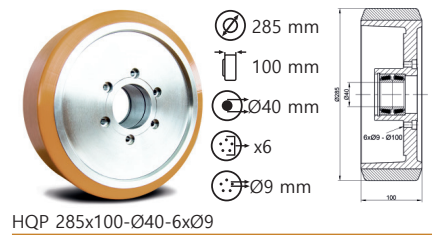
HQP 230x75-Ø30-5xØ13



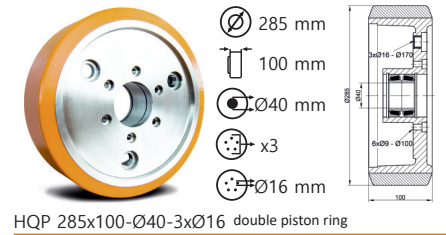
HQP 250x100-Ø80-5xØ19



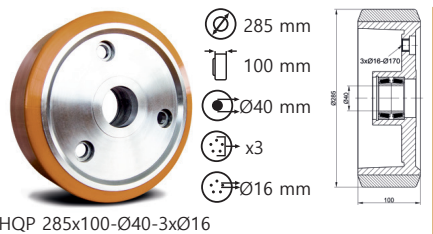
HQP 254x90-Ø40-5xØ15



HQP 285x100-Ø40-6xØ9



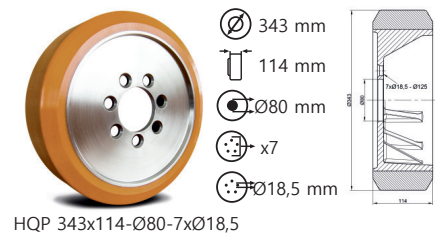
HQP 285x100-Ø40-3xØ16 double piston ring



HQP 285x100-Ø40-3xØ16



HQP 285x100-Ø40-6xØ16



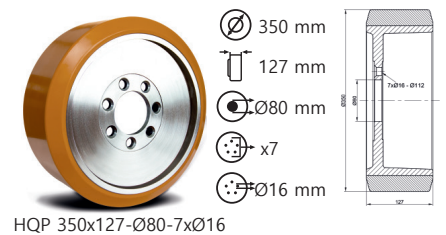
HQP 343x114-Ø80-7xØ18,5



HQP 343x140-Ø80-7xØ18,5



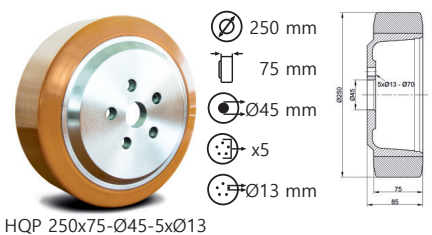
HQP 343x114-Ø90-7xØ18,5



HQP 350x127-Ø80-7xØ16









HQP 230x70-Ø65-5xØ13,5




HQP 250x75-Ø45-5xØ13






# Balance Wheels



	 mm	 mm	 mm	 mm	 kg
HQP 100x40	100	40	15	40	350
HQP 125x50	125	50	25	50	450
HQP 125x50	125	50	20	60	450
HQP 125x60	125	60	25	60	500
HQP 140x54	140	54	20	60	650
HQP 150x50	150	50	20	61	700
HQP 160x45	160	45	30	45	750


HQP








	 mm	 mm	 mm	 mm	 kg
HQP/A 100x35x15	100	35	15	48	250
HQP/A 125x40x20	125	40	20	46	350
HQP/A 150x45x20	150	45	20	46	450
HQP/A 160x45x20	160	45	20	46	550
HQP/A 180x50x20	180	50	20	58,5	650
HQP/A 200x50x20	200	50	20	58,5	700

HQP/A


# Load Wheels








	 mm	 mm	 mm	 mm	 kg
HQP 85x65x20	85	65	20	70	500
HQP 85x65x25	85	65	25	70	500
HQP 85x75x25	85	75	25	80	550
HQP 85x80x25	85	80	25	85	600
HQP 85x85x20	85	85	20	90	650
HQP 85x85x25	85	85	25	90	650
HQP 85x90x20	85	90	20	95	700
HQP 85x90x25	85	90	25	95	700
HQP 85x110x20	85	110	20	115	850
HQP 85x110x25	85	110	25	115	850


HQP






# Pallet Truck Wheels




	 mm	 mm	 mm	 mm	 kg
VBP 70x60x17	70	60	17	60	400
VBP 70x60x20	70	60	20	60	400
VBP 80x70x17	80	70	17	70	450
VBP 80x70x20	80	70	20	70	450
VBP 82x70x17	82	70	17	70	550
VBP 82x70x20	82	70	20	70	550
VBP 82x80x17	82	80	17	80	450
VBP 82x80x20	82	80	20	80	450
VBP 82x90x17	82	90	17	90	550
VBP 82x90x20	82	90	20	90	550
VBP 82x100x17	82	100	17	100	550
VBP 82x100x20	82	100	20	100	550
VBP 85x60x17	85	60	17	60	500
VBP 85x60x20	85	60	20	60	500
VBP 85x70x17	85	70	17	70	600
VBP 85x70x20	85	70	20	70	600
VBP 85x90x17	85	90	17	90	650
VBP 85x90x20	85	90	20	90	650
VBP 85x100x17	85	100	17	100	700
VBP 85x100x20	85	100	20	100	700
VBP 85x110x17	85	110	17	110	750
VBP 85x110x20	85	110	20	110	750






VBP




	 mm	 mm	 mm	 mm	 kg
ZBZ 70x60x17	70	60	17	60	450
ZBZ 70x60x20	70	60	20	60	450
ZBZ 80x60x20	80	60	20	60	475
ZBZ 80x70x20	80	70	20	70	500
ZBZ 80x80x20	80	80	20	80	550
ZBZ 82x70x17	82	70	17	70	500
ZBZ 82x70x20	82	70	20	70	500
ZBZ 82x80x17	82	80	17	80	550
ZBZ 82x80x20	82	80	20	80	550
ZBZ 82x90x17	82	90	17	90	550
ZBZ 82x90x20	82	90	20	90	550
ZBZ 82x100x17	82	100	17	100	550
ZBZ 82x100x20	82	100	20	100	550
ZBZ 85x60x17	85	60	17	60	550
ZBZ 85x60x20	85	60	20	60	550
ZBZ 85x70x17	85	70	17	70	600
ZBZ 85x70x20	85	70	20	70	600
ZBZ 85x80x20	85	80	20	80	700
ZBZ 85x90x20	85	90	20	90	800
ZBZ 85x100x20	85	100	20	100	950






ZBZ



	 mm	 mm	 mm	 mm	 kg
ZBZd 180x50x20	180	50	20	50	600
ZBZd 200x50x20	200	50	20	50	750

ZBZd / Deep Belly



	 mm	 mm	 mm	 mm	 kg
VBPd 180x50x20	180	50	20	50	600
VBPd 200x50x20	200	50	20	50	750

VBPd / Deep Belly

# Machine Equipments

**KKA**



**IA**



**KKAB**



**IAB**



**MDAI**



**MDA**



**MDAS**



**MDASc**



**MAS**



**DA**



**SA**



**SAi**



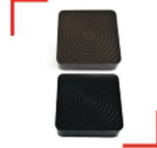
**MAM**



**MAIM**



**KT/KTs**



**PAM**



**PAMZB**



**PAIM**



**PAIMZB**



**PAMB**



**PAMBZB**



**PAMD**



**PAIMD**



**PMA**



**PRA/PRAB**



**PRd/PRk**



**PAS/PAIS**



**PPA**



**HIA**



**HIAZB**



**HPAIMZB**



**HPAIMD**



**MAMR**



**MAIMR**



**MAMB**



**MAMBR**



**AC3/PC/DC**



**AC/ACt/ACp**



**ACKK/ACKKt/PCKK**



**IPP/PIPP**



**PDK/PDKK**



**CDKK/KKCK**



**DK**



**PT1**



**PTB1/PTB1P**



**PT/PTt/PTk**



**BT/AT**



**MTs/AT**



ZTk/ZTs



PGT/PGT 1-2



NEW PRODUCT  
Ktd/KTk



PKC/PKB



PKCI/PKBI



PKCt/PKBt



PKCIt/PKBIt



AKCt/AKBt



AKC/AKB



PYCt/PYBt



PYC/PYB



PYCK/PYBk



PYCP/PYBP



PYCPt/PYBPt



PYCPk/PYBPk



PETEKB/PETEKC



PTB2



PTC2



PTC3/PTB3



PTB3D



PTC4/PTB4



PTB4d/PTB6d



PTC6/PTB6



ATB4/ATC4



ATB4p/ATC4p



PTBy/BTB



BKB/BKC



BYB/BYC



BSB/BSC



BTVB/ BTVC



BTV/BTVBb



BDV



BKV



IM/SIM



PM



ZMb/ZMk



ZMck



PMC



ZMcb



SMb



MI



DI



M



D



YPKk/YPKb



YPKp/YPK2



YPK3/YPK4



NEW PRODUCT  
SRK





NEW PRODUCT

**SKK**



**TCBp**



**TCCp/TBBp**



**TCp/TBp**



**TKCP**

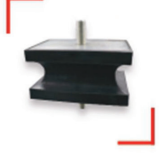


**TMCCp**



NEW PRODUCT

**TCCd**



**GCBD**



NEW PRODUCT

**GD**



NEW PRODUCT

**G45**



NEW PRODUCT

**G90**



NEW PRODUCT

**BC**



NEW PRODUCT

**KMM**



NEW PRODUCT

**TELESCOPIC RAIL**





+90 216 304 06 79 (5hat)

+90 216 309 91 48

info@emesteker.com

www.emesteker.com

Orta Mah. 30 Ağustos cad. No: 61 Tuzla-İstanbul / TÜRKİYE